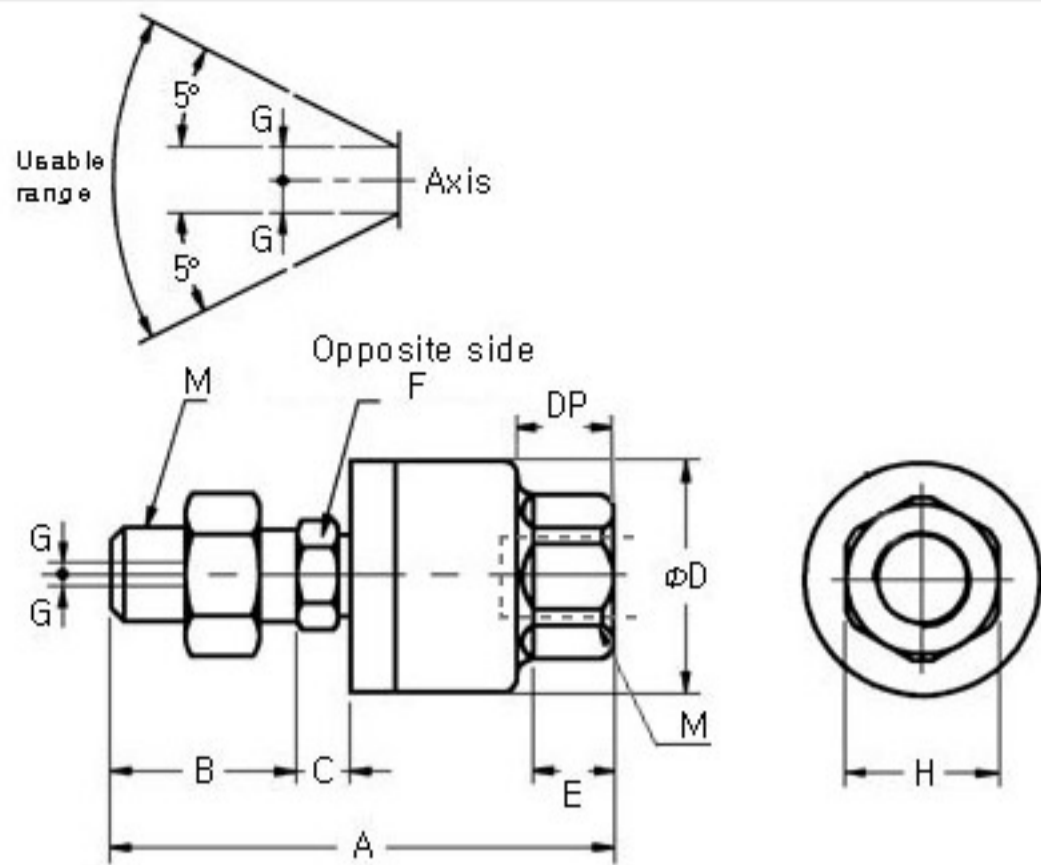




**THRUST JOINTS
TJ(FJ)**



If You Click The Bearing Number In The Below, You Will Check The Drawing Applied Numerical Values Correspondent To Each Bearing Number.

Bearing No	TJ 5	TJ 6	TJ 8	TJ 10	TJ 12	TJ 14	TJ 16						
	TJ 18	TJ 20	TJ 22	TJ 24	TJ 26	TJ30	TJ 36						
Bearing No.	Thread size		Dimensions mm										Bore diameter of cylinder ϕ
	M	DP	A	B	C	ϕD	E	F	H	Titing angle	Pemissible excentricity G	Tensile & compressive strength Max Kgf	
TJ 5	5 x 0.8	7	34.5	14	2	16	5	6	10	10°	0.5	12	10, 15
TJ 6	6 x 1	7	34.5	14	2	16	5	6	10	10°	0.5	12	15
TJ 8	8 x 1.25	8	44	17.5	4.5	21	7	8	13	10°	0.5	110	20
TJ 10	10 x 1.25	9	49.5	19.5	5	24	8	10	17	10°	0.5	250	25, 30
TJ 12	12 x 1.75	13	60	20	6	31	11	12	22	10°	0.75	440	30, 40
TJ 14	14 x 1.5	13	60	20	6	31	11	14	22	10°	0.75	600	40
TJ 16	16 x 1.5	15	71.5	22	7.5	41	13.5	16	27	10°	1	1,100	50
	* 16 x 2.0												
TJ 18	18 x 1.5	15	74.5	25	7.5	41	13.5	18	27	10°	1	1,100	50, 63
TJ 20	20 x 1.5	18	90.5	30	9.5	50	16	20	32	10°	1.25	1,800	80
	* 20 x 2.5												
TJ 22	22 x 1.5	18	89.5	29	9.5	50	16	22	32	10°	1.25	1,800	80
TJ 24	24 x 1.5	24	110	35	11.5	59.5	20	26	41	10°	2	2,800	100
	* 24 x 3												
TJ 26	26 x 1.5	24	110	35	11.5	59.5	20	26	41	10°	2	2,800	100
TJ 30	30 x 1.5	38	152	45	14	79	22	30	46	10°	2	5,400	125, 140
	* 30 x 2.0												
TJ 36	36 x 1.5	42	178	55	16	96	24	36	55	10°	3.0	7,100	160